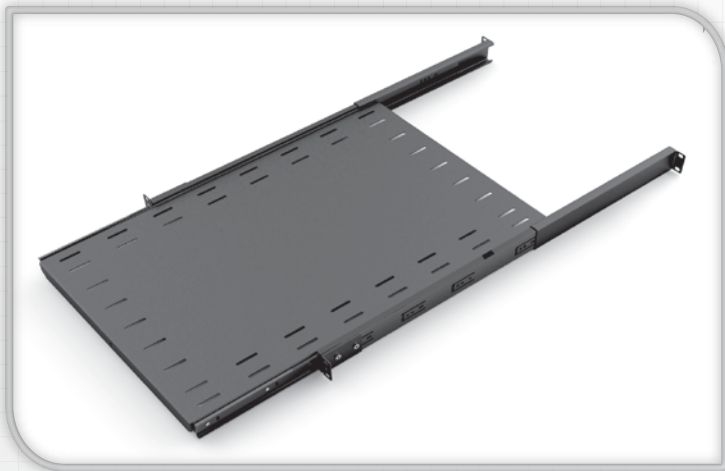


SLIDING SHELF



Features

- 50kg distributed load capacity
- Available in two sizes
- Adjustable mounting depth

Universal 19" mounting. Suitable for 600mm - 1200mm deep racks. Perforated to allow tiedown of equipment if required.

Details

All shelves are made from 1.5mm powdercoated zinc annealed steel.

Item includes:

- Shelf
- Slides
- Mounting hardware

Colour
(Dulux Part No)

Black
#90132679



Ordering Information:

Size	Shelf Size W x D	Mounting Rail Depth Min - Max	Part No:
Large	417 x 655mm	395 - 920mm	800-252055
Small	417 x 405mm	252 - 535mm	800-440088

*For more information please contact the sales department