

19" Rack Installation Instruction

1. Verify the shipment details

Check that the labelled racks match your purchase order. Do not unpack until you are ready to install

2. Floor Loading

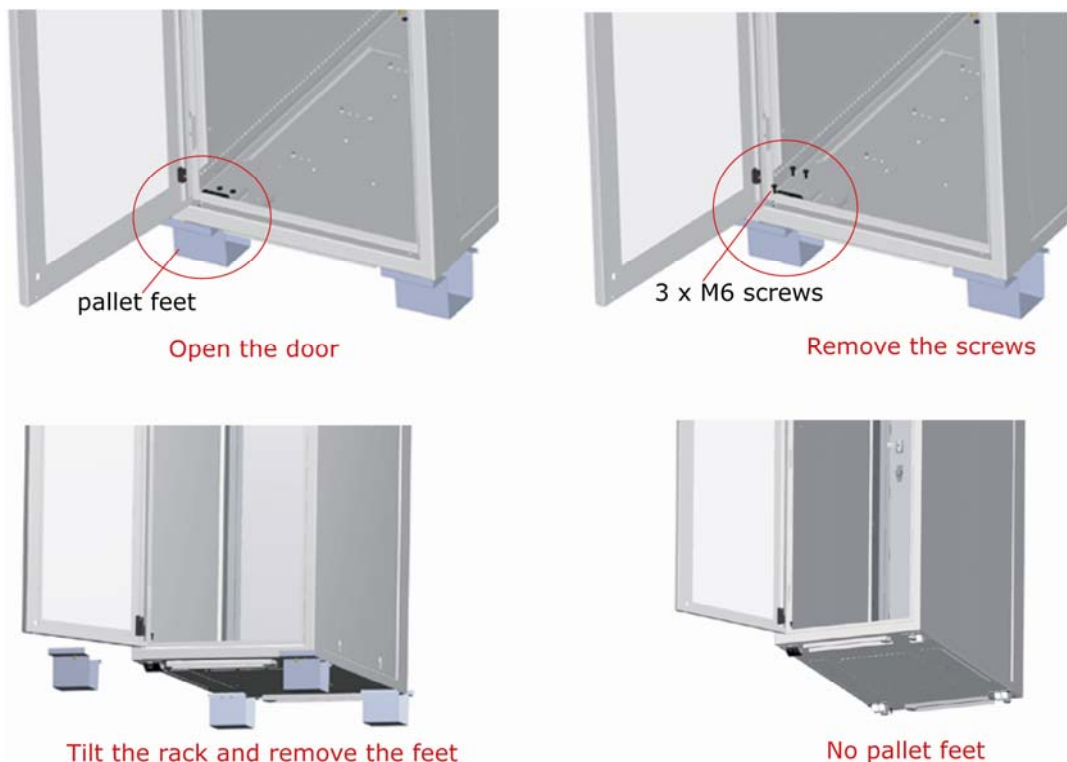
Loaded racks concentrate high forces on the levelling feet. Check that the equipment load for the rack you are installing does not exceed the maximum capacity of the rack (800 kg).

Check that the floor and sub floor can support the point loads at the levelling feet (up to 200 kg on each foot). For raised floor applications, consult the flooring manufacturer before installing equipment

3. Remove outer wrap

4. Remove pallet feet

Open the front door, remove 3 wafer head screws in each front corner from the inside. Close the door.



Tilt the rack to the back and remove the pallet feet from under the front of the rack. Allow the front of the rack to rest on the floor

Open the rear door and repeat the process to remove the rear pallet feet.

5. Adjust levelling feet

Screw the levelling feet down by hand until all four contact the floor.

If casters are fitted, screw the feet down another turn to ensure the rack is resting on the feet, and not on the casters. Check for level, either against an adjacent rack or using a spirit level. Adjust as necessary to level the cabinet.



Check that both doors close easily, without interference at the top or bottom

Do not load the rack until this step is completed

6. Install Power Rails

Consult your UPS and power distribution manuals for detailed electrical requirements and installation instructions, especially for dual corded systems. Ensure the voltage of the supply and the power rail are matched (nominally 220/240V). Power rails are available in 6 way, 10 way and 20 way.

10 Way and 20 Way (Vertical): Vertical Power rails are provided with a rear mount which mates to the keyhole slots in the accessories tray. Install the power rails, and route the cable through the top or bottom of the rack or to the UPS as required.

6 Way (Horizontal): Horizontal power rails are usually supplied fitted to the vertical mounting rails with 6mm screws and cage nuts. These may be relocated as required to suit the rack layout.

Rev Date: 28 May 2007

6 Way ThermoRail: The ThermoRail is a 6 way horizontal power rail which is switched via an external thermostat for the control of cooling fans. Locate the probe at the top rear of the cabinet or next to sensitive equipment, or where hot spots are expected.

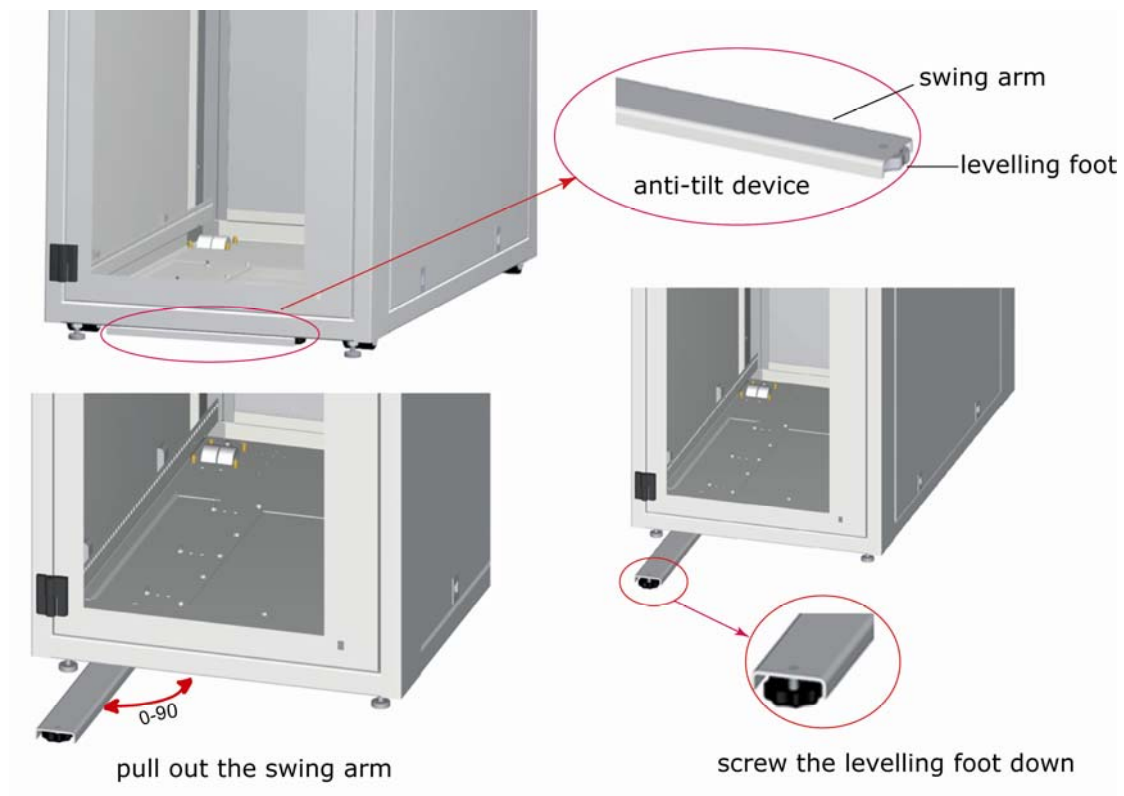
Power rails may be ordered on line at www.server-racks-australia.com.au

7. Anti-Tilt

The anti tilt bar, if fitted, prevents the rack tipping due to the weight of the open door as equipment is withdrawn on sliding shelves.

To deploy: The pivot is near the door hinges. Reach under the base of the rack at the lock side and pull out the swing arm.

Screw the levelling foot down until it touches the floor.



To stow: Screw the levelling foot up until it is inside the channel. Swing the arm back under the rack.

8. Cable Trays

Cable Trays are usually supplied fitted to the vertical mounting rails with 6mm screws and cage nuts. These may be relocated as required to suit the rack layout.



SERVER RACKS AUSTRALIA

www.server-racks-australia.com.au

email: enquiry@server-racks-australia.com.au | phone: 02 6298 1855 | fax: 02 6297 5503 | 4-6 Endurance Ave Queanbeyan NSW 2620

9. Rack Accessories

SRA offers the following rack accessories:

Fixed Shelves (400, 600 and 700 deep)

Sliding Shelves (400, 600 and 700 deep)

Cantilever Shelves (2 RU and 3 RU high)

Blanking Panels (1 RU, 2 RU, 3 RU and 6 RU)

1U Front Cable Manager

Mounting hardware (a pack of 50 6mm screws, washers and cage nuts)

Accessories are normally shipped inside the rack in protective packaging. Remove the packaging and follow the detailed assembly instructions to install the accessories.

Accessories may be ordered on line at www.server-racks-australia.com.au

10. Fan Trays

Fan Trays are usually supplied fitted to the vertical mounting rails with 6mm screws and cage nuts. These may be relocated as required to suit the rack layout.

SRA offers the following Fan Trays:

3 Fan Tray 1 RU

6 Fan Tray 1 RU

Fan Trays may also be ordered on line at www.server-racks-australia.com.au

11. Removal / Installation of Doors

When fully open, doors may be simply lifted off their hinges.

Installation also requires Doors to be fully open, so that the locking dogs on the hinge side are disengaged. The door can be conveniently supported on your foot while you align all three hinges, and lower the door onto the hinge pins.



12. Removal / Installation of Side Panels

Side Panels may be removed for easier access to equipment and cabling or for baying racks together.

Side Panels are secured for shipping with 2 X 6mm screws (one per vertical edge), which are easily accessed from inside the cabinet.

Removal: Remove the screws. Pull down on the retaining clips at the top and lean the top of the Side Panel to the outside. Lift up and away from the rack.

Retaining screws may be replaced for security or left off, for easy future access.



Replacement: The side panel has a “top” and a “bottom”. The top is identified by semi circular notches in the vertical flange (edge) near the top. Normally, the orientation of a Side Panel will maintained when it is removed and replaced, as it is convenient to store Side Panels vertically.

Fit the side Panel into the recess in the frame, engaging the bottom clips in the retaining slots. Push the Side Panel home. The top clips will hold it in place.

Up to 8 M6 retaining screws may be used on each Side Panel for security.

