

SCEC Rack Installation Instruction

1. Verify the shipment details

Check that the labelled racks match your purchase order. Do not unpack until you are ready to install

2. Floor Loading

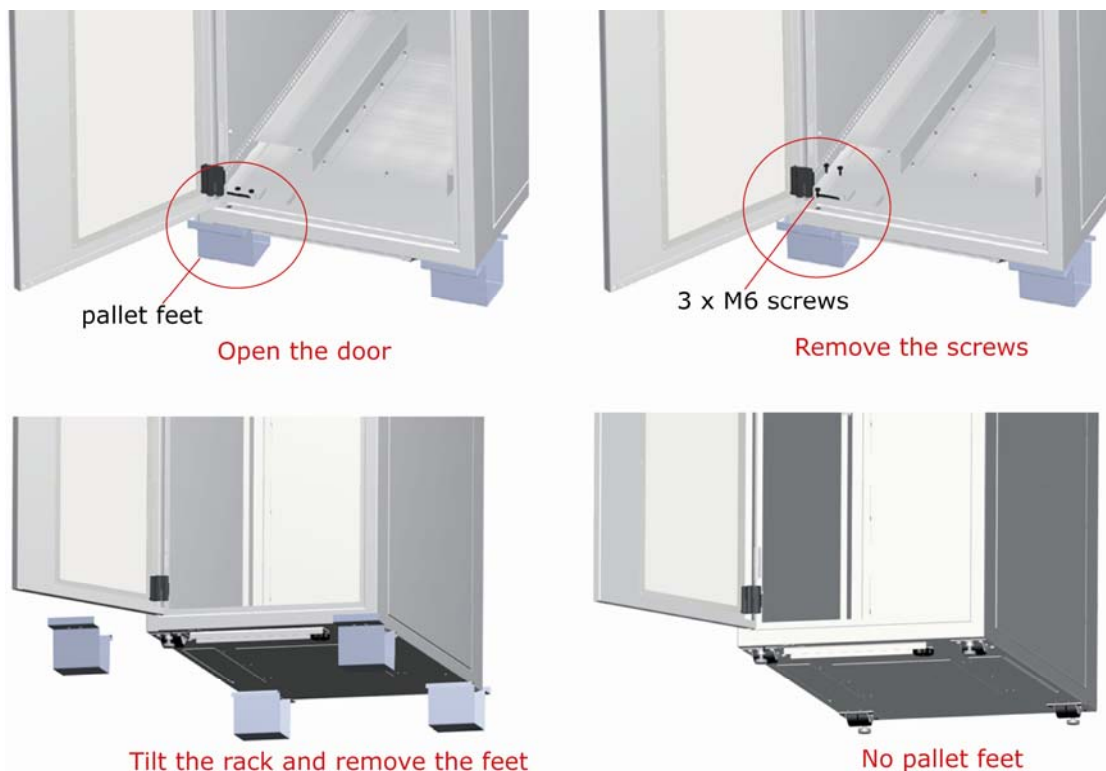
Loaded racks concentrate high forces on the levelling feet. Check that the equipment load for the rack you are installing does not exceed the maximum capacity of the rack (800 kg).

Check that the floor and sub floor can support the point loads at the levelling feet (up to 250 kg on each foot, including the rack). For raised floor applications, consult the flooring manufacturer before installing equipment

3. Remove outer wrap

4. Remove pallet feet

Open the front Door and remove 3 wafer head screws from inside in each front corner and close the Door.



Tilt the rack to the back and remove the pallet feet from under the front of the rack. Close the front Door and allow the front of the rack to rest on the floor.

Open the rear Door and repeat the process to remove the rear pallet feet.



SERVER RACKS AUSTRALIA

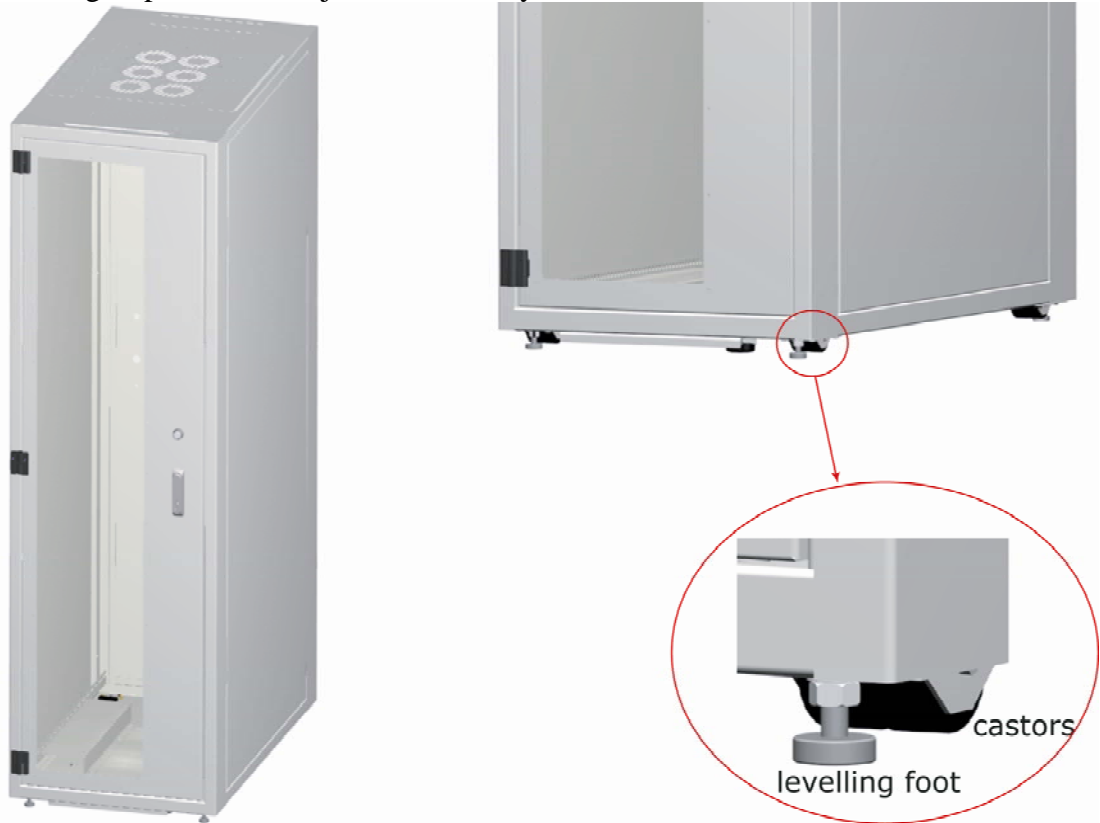
www.server-racks-australia.com.au

email: enquiry@server-racks-australia.com.au | phone: 02 6298 1855 | fax: 02 6297 5503 | 4-6 Endurance Ave Queanbeyan NSW 2620

5. Adjust levelling feet

Screw the levelling feet down by hand until all four contact the floor.

If casters are fitted, screw the feet down another turn to ensure the rack is resting on the feet and not on the casters. Check for level, either against an adjacent rack or using a spirit level. Adjust as necessary to level the cabinet.



Check that both Doors close easily, without interference at the top or bottom



Do not load the rack until this step is completed

6. Install Power Rails

Consult your UPS and power distribution manuals for detailed electrical requirements and installation instructions, especially for dual corded systems. Ensure the voltage of the supply and the power rail are matched (nominally 220/240V). Power rails are available in 6 way, 10 way and 20 way.

10 Way and 20 Way (Vertical): Vertical Power rails are provided with a rear mount which mates to the keyhole slots in the accessories tray. Install the power rails, and route the cable through the top or bottom of the rack or to the UPS as required.

6 Way (Horizontal): Horizontal power rails are usually supplied fitted to the vertical mounting rails with 6mm screws and cage nuts. These may be relocated as required to suit the rack layout.

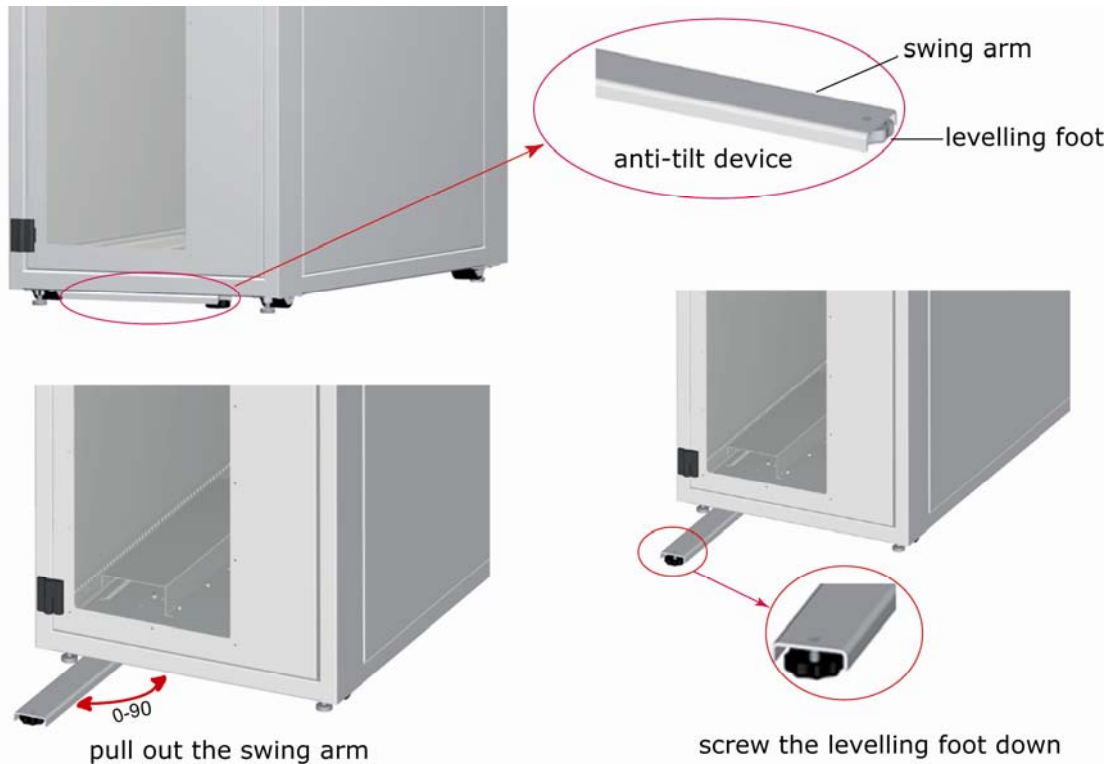
6 Way ThermoRail: The ThermoRail is a 6 way horizontal power rail which is switched via an external thermostat for the control of cooling fans. Locate the probe at the top rear of the cabinet or next to sensitive equipment, or where hot spots are expected.

Power rails may be ordered on line at www.server-racks-australia.com.au

7. Anti-Tilt

The anti tilt bar, if fitted, prevents the rack tipping due to the weight of the open Door as equipment is withdrawn on sliding shelves.

To deploy: The pivot is near the Door Hinges. Reach under the base of the rack at the lock side and pull out the swing arm. Screw the levelling foot down until it touches the floor.



To store: Screw the levelling foot up until it is inside the channel. Swing the arm back under the rack.

8. Cable Trays

Cable Trays are usually supplied fitted to the vertical mounting rails with 6mm screws and cage nuts. These may be relocated as required to suit the rack layout.

9. Rack Accessories

SRA offers the following rack accessories:

- Fixed Shelves (400, 600 and 700 deep)

- Sliding Shelves (400, 600 and 700 deep)

- Cantilever Shelves (2 RU and 3 RU high)

- Blanking Panels (1 RU, 2 RU, 3 RU and 6 RU)

- 1U Front Cable Manager

- Mounting hardware (a pack of 50 6mm screws, washers and cage nuts)

Accessories are normally shipped inside the rack in protective packaging.

Remove the packaging and follow the detailed assembly instructions inside the packaging to install the accessories.

Accessories may be ordered on line at www.server-racks-australia.com.au

10. Fan Trays

Fan Trays are usually supplied fitted to the vertical mounting rails with 6mm screws and cage nuts. These may be relocated as required to suit the rack layout.

SRA offers the following Fan Trays:

- 3 Fan Tray 1 RU

- 6 Fan Tray 1 RU

Fan Trays may be ordered on line at www.server-racks-australia.com.au

11. Removal / Installation of Doors

Class “C” and Class “B” Doors are heavy. For example, a 600mm X 42 RU Door weighs over 20 kg.

An 800mm wide X 45 RU Door with fans can weigh 35kg, so 800 mm wide Doors are best handled by two people

The Doors lift off when fully open, and must be in the fully open position when they are being re-installed, to ensure the hinge side locking dogs are fully disengaged from their slots in the frame.

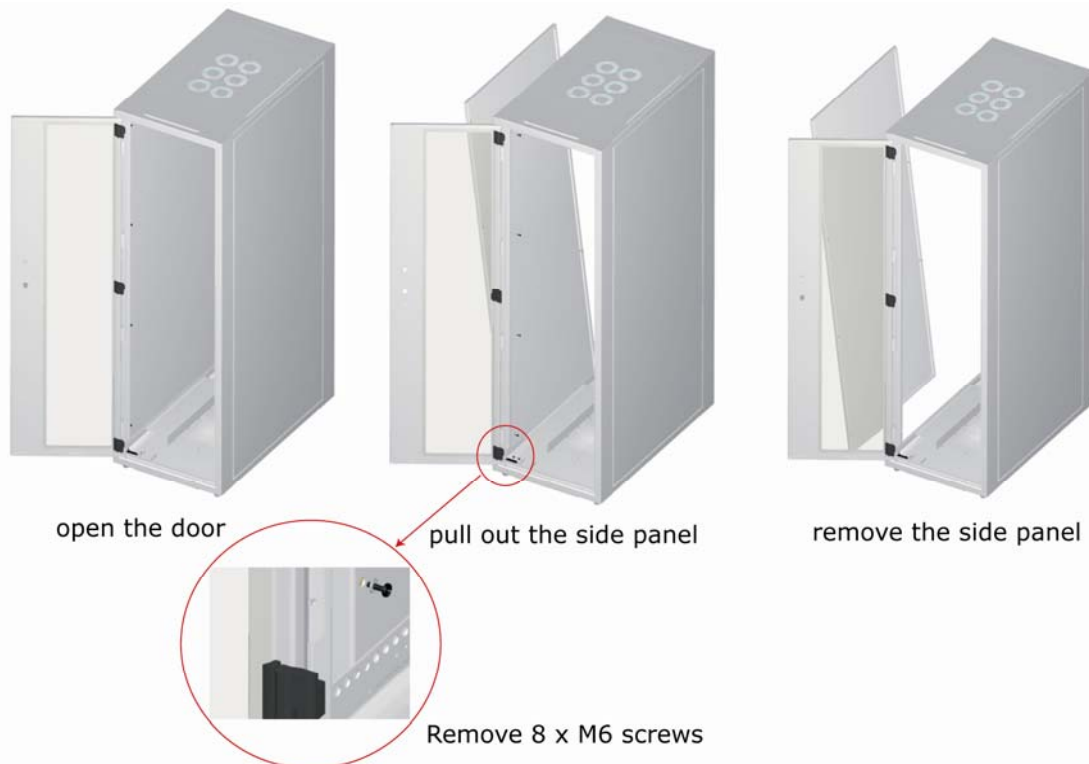
12. Removal / Installation of Side Panels

Side Panels may be removed for easier access to equipment and cabling or for baying racks together. Note that Side Panels can also be quite heavy. For example, a 42 RU X 1050 deep Side Panel weighs 25kg.

Side Panels are secured with 8 X 6mm screws (4 per vertical edge), which are easily accessed from inside the cabinet.



Removal: Remove the screws, supporting the Side Panel from the outside while the last screw is removed, to prevent it falling.



Replacement: The Side Panel has a top and bottom side. The top is identified by semi circular notches on the vertical edge. Normally, the orientation of the Side Panels will maintained when it is removed and replaced if it is stored vertically.

Fit the Side Panel into the recess in the frame and, supporting the Side Panel from the outside, start one screw to prevent it falling. Assemble the rest of the screws loosely, and then tighten.

13. Baying (Multiple Rack Installations)

Racks ordered for baying are normally delivered with Side Panels on the end racks only. Note that bayed racks must be the same height and depth, but may have different widths.

Install one end rack and level it (steps 1 through 5 above).

Install the next rack and adjust the feet so that the rack is lined up with the previous rack to within 2mm.

Using the baying kit, both the two racks together through the Side Panel mounting holes in 8 places, making sure the spacer from the kit is located between the racks.



14. Cable Entries

Cable entries are provided in the top and bottom of the rack frame. Baffle Panels and Cable Entry Covers must be in place to maintain SCEC endorsement. Cable Entry Covers should be adjusted to give a minimum opening after cabling is completed. Simply remove the Nyloc nuts holding the cover and move to the closest set of holes.



Remove 2 nuts from baffel panel



Remove the baffel panel



Remove 3 nuts from the cable entry cover



Move the cover to the closest set of holes